

Version for
single line wind
instruments

Cello Suite in G Major BWV 1007

(here in C# Major)

J. S. Bach around 1720

Edited 2012 by

Klaus Smedegaard Bjerre

Prélude
♩=68



4



7



10



13



16



19



22



Version for
single line wind
instruments

Cello Suite in G Major BWV 1007

(here in C# Major)

25



28



31



34



36



38



40



Version for
single line wind
instruments

Cello Suite in G Major BWV 1007

(here in C# Major)

Allemande

$\text{♩} = 42$

47

46

51

49

52

55

58

59

61

63

64

67

70

71

73

Version for
single line wind
instruments

Cello Suite in G Major BWV 1007

(here in C# Major)

Courante

$\text{♩} = 76$

79

83

87

91

93

95

96

99

100

103

105

109

113

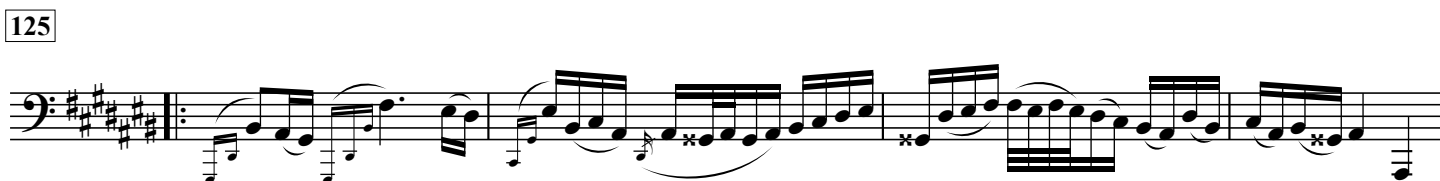
Version for
single line wind
instruments

Cello Suite in G Major BWV 1007

(here in C# Major)

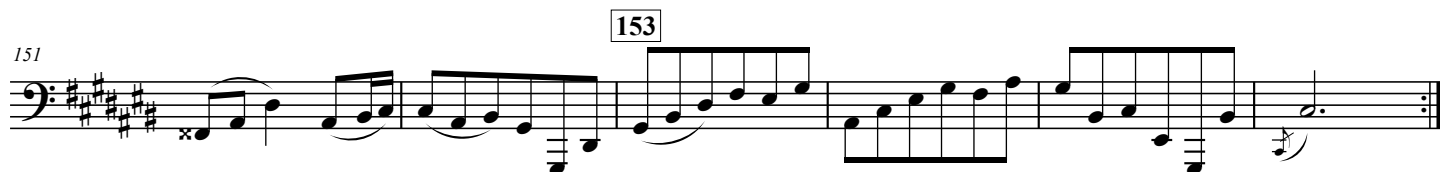
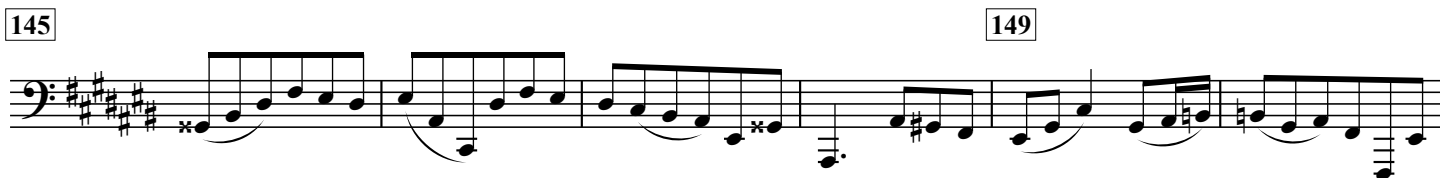
Sarabande

$\text{♩} = 72$



Menuet I

$\text{♩} = 88$



Version for
single line wind
instruments

Cello Suite in G Major BWV 1007

(here in C# Major)

Menuet II
♩ = 88

161

163

165

169

173

175

177

Menuet I da Capo

Gigue
♩ = 80

185

188

189

193

195

197

201

202

205

208

209

213

Detailed description: This page contains the musical notation for Menuet II and Gigue from the Cello Suite in G Major BWV 1007, arranged for single-line wind instruments. The key signature is C# Major (three sharps: F#, C#, G#). Menuet II is in 3/4 time with a tempo of quarter note = 88. It consists of 177 measures. The notation is in bass clef. The first system (measures 161-165) shows a melodic line with eighth and sixteenth notes. The second system (measures 165-169) includes a repeat sign. The third system (measures 169-173) continues the melodic line. The fourth system (measures 173-177) concludes the piece with a repeat sign. Gigue is in 6/8 time with a tempo of quarter note = 80. It consists of 213 measures. The notation is in bass clef. The first system (measures 185-188) begins with a repeat sign. The second system (measures 188-193) continues the piece. The third system (measures 193-197) features a melodic line with eighth notes. The fourth system (measures 197-201) continues the melodic line. The fifth system (measures 201-205) continues the melodic line. The sixth system (measures 205-208) continues the melodic line. The seventh system (measures 208-213) concludes the piece with a repeat sign. Measure numbers 161, 163, 165, 169, 173, 175, 177, 185, 188, 189, 193, 195, 197, 201, 202, 205, 208, 209, and 213 are indicated in boxes above the staff.