

Euphonium $\text{B}\flat$
(Tuba $\text{E}\flat$ / $\text{BB}\flat$)

Smidighed i alle rene Mol-tonearter

Flexibility in all natural Minor keys

Udgivet 2003 af
(Edited 2003 by)
Klaus Bjerre

Hveranden dag: Stød •
Every other day: Tongued

Mellemløjet
The mid range

1



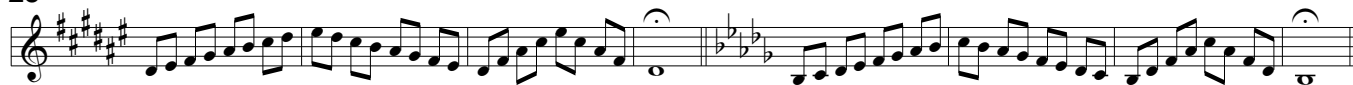
9



17



25



33



41



Hveranden dag: Legato (

49 Every other day: Legato



59



69



Euphonium $\text{B}\flat$

(Tuba $\text{E}\flat$ / $\text{BB}\flat$)

Smidighed i alle rene Mol-tonearter

Flexibility in all natural Minor keys

79



89



99



Højden

The high range

Hveranden dag: Legato (

Every other day: Legato

109



119



129



139



149



159



Euphonium $\text{B}\flat$
(Tuba $\text{E}\flat$ / $\text{BB}\flat$)

Smidighed i alle rene Mol-tonearter

Flexibility in all natural Minor keys

Hveranden dag: Stød •

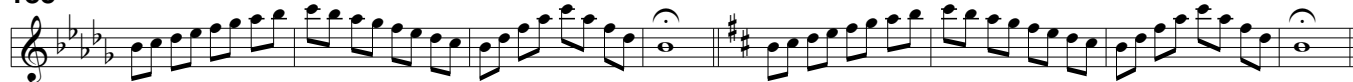
169 Every other day: Tongued



177



185



193



201



209

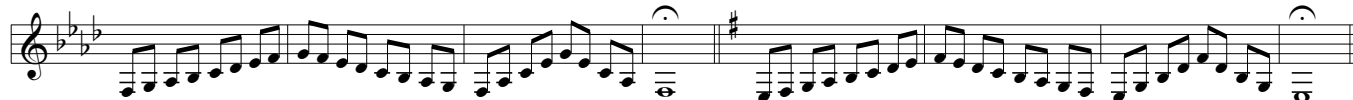


Dybden

Hveranden dag: Stød •

The low range

217 Every other day: Tongued



225



233



Euphonium $\text{B}\flat$

(Tuba $\text{E}\flat$ / $\text{BB}\flat$)

Smidighed i alle rene Mol-tonearter

Flexibility in all natural Minor keys

241

Exercise 241 consists of two measures of eighth notes. The first measure is in G minor (one sharp, two flats) and the second is in E minor (three flats). Both measures end with a fermata over a whole note. A dashed line labeled '8vb' indicates the starting point for the tuba and euphonium parts.

249

Exercise 249 consists of two measures of eighth notes. The first measure is in D minor (two sharps, two flats) and the second is in B minor (two sharps, three flats). Both measures end with a fermata over a whole note. A dashed line labeled '8vb' indicates the starting point for the tuba and euphonium parts.

257

Exercise 257 consists of two measures of eighth notes. The first measure is in C minor (three flats) and the second is in A minor (no sharps or flats). Both measures end with a fermata over a whole note. A dashed line labeled '8vb' indicates the starting point for the tuba and euphonium parts.

Hveranden dag: Legato (

Every other day: Legato

265

Exercise 265 consists of two measures of eighth notes. The first measure is in B minor (two sharps, three flats) and the second is in G minor (one sharp, two flats). Both measures end with a fermata over a whole note. A slur is placed under the eighth notes in each measure.

275

Exercise 275 consists of two measures of eighth notes. The first measure is in F minor (two sharps, three flats) and the second is in D minor (two sharps, two flats). Both measures end with a fermata over a whole note. A slur is placed under the eighth notes in each measure.

285

Exercise 285 consists of two measures of eighth notes. The first measure is in E minor (three flats) and the second is in C minor (three flats). Both measures end with a fermata over a whole note. A slur is placed under the eighth notes in each measure.

295

Exercise 295 consists of two measures of eighth notes. The first measure is in D minor (two sharps, two flats) and the second is in B minor (two sharps, three flats). Both measures end with a fermata over a whole note. A dashed line labeled '8vb' indicates the starting point for the tuba and euphonium parts.

305

Exercise 305 consists of two measures of eighth notes. The first measure is in C minor (three flats) and the second is in A minor (no sharps or flats). Both measures end with a fermata over a whole note. A dashed line labeled '8vb' indicates the starting point for the tuba and euphonium parts.

315

Exercise 315 consists of two measures of eighth notes. The first measure is in B minor (two sharps, three flats) and the second is in G minor (one sharp, two flats). Both measures end with a fermata over a whole note. A dashed line labeled '8vb' indicates the starting point for the tuba and euphonium parts.