

Smidighed i alle rene Mol-tonearter

Flexibility in all natural Minor keys

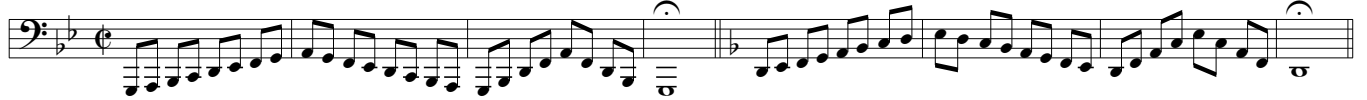
Hveranden dag: Stød •

Every other day: Tongued

Mellemlejet

The mid range

1



9



17



25



33



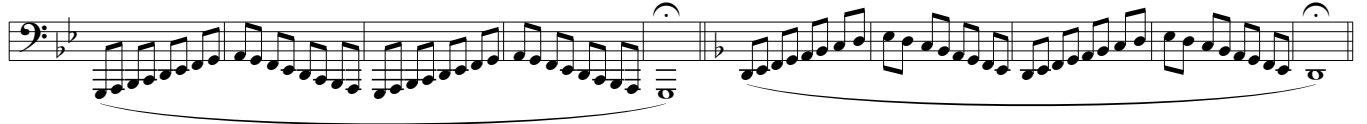
41



Hveranden dag: Legato (

Every other day: Legato

49



59



69

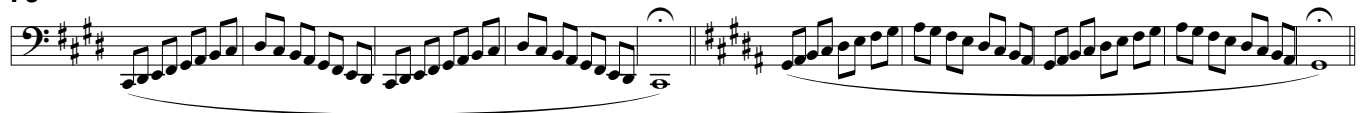


1

Smidighed i alle rene Mol-tonearter

Flexibility in all natural Minor keys

79



89



99



Højden

The high range

Hveranden dag: Legato (

Every other day: Legato

109



119



129



139



149



159



Hveranden dag: Stød •

Every other day: Tongued

169



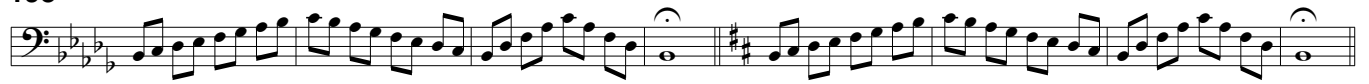
177



185



193



201



209



Dybden

The low range

Hveranden dag: Stød •

Every other day: Tongued

217



225



233



Smidighed i alle rene Mol-tonearter

Flexibility in all natural Minor keys

241

Exercise 241 consists of two staves of music. The first staff is in the key of B-flat major (one flat) and the second staff is in the key of D major (two sharps). Both staves feature a continuous eighth-note pattern that moves up and down the scale. A dashed line labeled '8vb' is positioned below each staff to indicate the starting point of the exercise.

249

Exercise 249 consists of two staves of music. The first staff is in the key of B-flat major (one flat) and the second staff is in the key of D major (two sharps). Both staves feature a continuous eighth-note pattern that moves up and down the scale. A dashed line labeled '8vb' is positioned below each staff to indicate the starting point of the exercise.

257

Exercise 257 consists of two staves of music. The first staff is in the key of B-flat major (one flat) and the second staff is in the key of D major (two sharps). Both staves feature a continuous eighth-note pattern that moves up and down the scale. A dashed line labeled '8vb' is positioned below each staff to indicate the starting point of the exercise.

Hveranden dag: Legato (

Every other day: Legato

265

Exercise 265 consists of two staves of music. The first staff is in the key of B-flat major (one flat) and the second staff is in the key of D major (two sharps). Both staves feature a legato eighth-note pattern that moves up and down the scale. A dashed line labeled '8vb' is positioned below each staff to indicate the starting point of the exercise.

275

Exercise 275 consists of two staves of music. The first staff is in the key of B-flat major (one flat) and the second staff is in the key of D major (two sharps). Both staves feature a legato eighth-note pattern that moves up and down the scale. A dashed line labeled '8vb' is positioned below each staff to indicate the starting point of the exercise.

285

Exercise 285 consists of two staves of music. The first staff is in the key of B-flat major (one flat) and the second staff is in the key of D major (two sharps). Both staves feature a legato eighth-note pattern that moves up and down the scale. A dashed line labeled '8vb' is positioned below each staff to indicate the starting point of the exercise.

295

Exercise 295 consists of two staves of music. The first staff is in the key of B-flat major (one flat) and the second staff is in the key of D major (two sharps). Both staves feature a legato eighth-note pattern that moves up and down the scale. A dashed line labeled '8vb' is positioned below each staff to indicate the starting point of the exercise.

305

Exercise 305 consists of two staves of music. The first staff is in the key of B-flat major (one flat) and the second staff is in the key of D major (two sharps). Both staves feature a legato eighth-note pattern that moves up and down the scale. A dashed line labeled '8vb' is positioned below each staff to indicate the starting point of the exercise.

315

Exercise 315 consists of two staves of music. The first staff is in the key of B-flat major (one flat) and the second staff is in the key of D major (two sharps). Both staves feature a legato eighth-note pattern that moves up and down the scale. A dashed line labeled '8vb' is positioned below each staff to indicate the starting point of the exercise.