

**Hveranden dag: Stød •****Mellemløjet**

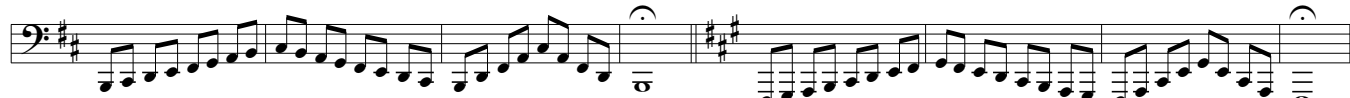
Every other day: Tongued

The mid range

1



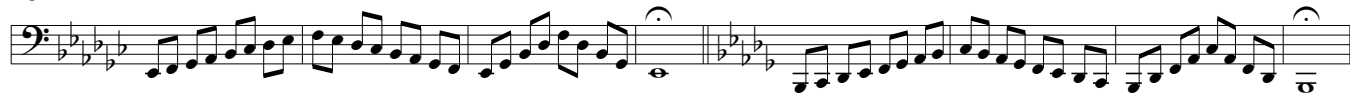
9



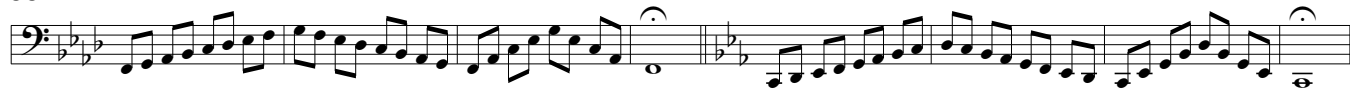
17



25



33

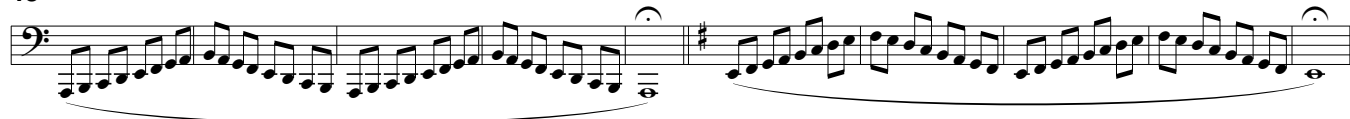


41

**Hveranden dag: Legato (**

Every other day: Legato

49



59



69



1

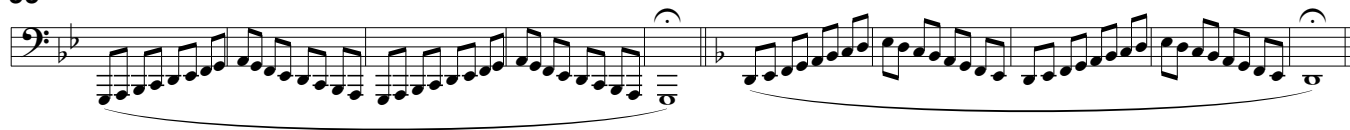
79



89



99



### Højden

The high range

Hveranden dag: Legato (

Every other day: Legato

109



119



129



139



149



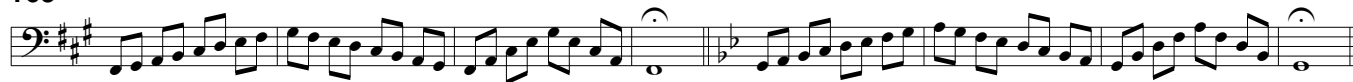
159



Hveranden dag: Stød •

Every other day: Tongued

169



177



185



193



201



209



Dybden

The low range

Hveranden dag: Stød •

Every other day: Tongued

217



225



233



241

Exercise 241 consists of two staves of eighth-note patterns. The first staff is in the key of C minor (one flat) and the second staff is in the key of D minor (two flats). Both staves feature a continuous eighth-note scale-like pattern.

249

Exercise 249 consists of two staves of eighth-note patterns. The first staff is in the key of E minor (three sharps) and the second staff is in the key of F minor (two flats). Both staves feature a continuous eighth-note scale-like pattern. An 8vb marking is present below the first staff.

257

Exercise 257 consists of two staves of eighth-note patterns. The first staff is in the key of G minor (two sharps) and the second staff is in the key of A minor (no sharps or flats). Both staves feature a continuous eighth-note scale-like pattern. An 8vb marking is present below the first staff.

Hveranden dag: Legato (

Every other day: Legato

265

Exercise 265 consists of two staves of eighth-note patterns. The first staff is in the key of B minor (two sharps) and the second staff is in the key of C minor (one flat). Both staves feature a continuous eighth-note scale-like pattern with a slur underneath.

275

Exercise 275 consists of two staves of eighth-note patterns. The first staff is in the key of D minor (two flats) and the second staff is in the key of E minor (three sharps). Both staves feature a continuous eighth-note scale-like pattern with a slur underneath.

285

Exercise 285 consists of two staves of eighth-note patterns. The first staff is in the key of F minor (two flats) and the second staff is in the key of G minor (two sharps). Both staves feature a continuous eighth-note scale-like pattern with a slur underneath.

295

Exercise 295 consists of two staves of eighth-note patterns. The first staff is in the key of A minor (no sharps or flats) and the second staff is in the key of B minor (two sharps). Both staves feature a continuous eighth-note scale-like pattern with a slur underneath.

305

Exercise 305 consists of two staves of eighth-note patterns. The first staff is in the key of C minor (one flat) and the second staff is in the key of D minor (two flats). Both staves feature a continuous eighth-note scale-like pattern with a slur underneath. An 8vb marking is present below the first staff.

315

Exercise 315 consists of two staves of eighth-note patterns. The first staff is in the key of E minor (three sharps) and the second staff is in the key of F minor (two flats). Both staves feature a continuous eighth-note scale-like pattern with a slur underneath. An 8vb marking is present below the first staff.