

Flexibility in all Major keys

Mellemelejet

Hveranden dag: Stød •

The mid range

1 Every other day: Tongued



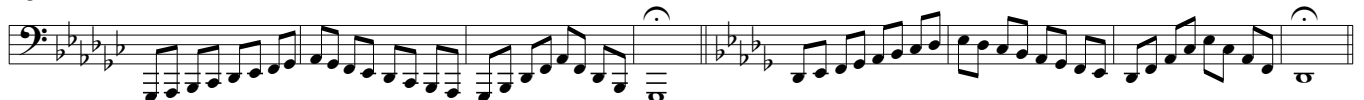
9



17



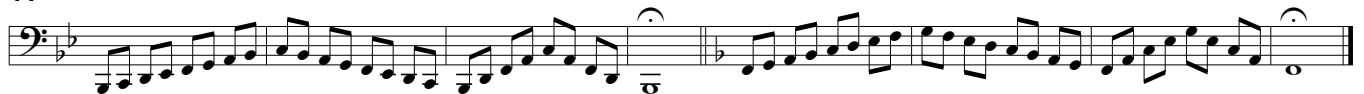
25



33



41



Hveranden dag: Legato (

49 Every other day: Legato



59



69



79



89



99



Højden

The high range

Hveranden dag: Legato (

Every other day: Legato

109



119



129



139



149



159



Hveranden dag: Stød •

Every other day: Tongued

169



177



185



193



201



209



Dybden

Hveranden dag: Stød •

The low range

217 Every other day: Tongued



225



233



Smidighed i alle Dur-tonearter

Flexibility in all Major keys

241

Exercise 241 consists of two staves of music. The first staff is in a major key (three sharps) and features an ascending eighth-note scale. The second staff is in the corresponding minor key (three flats) and features a descending eighth-note scale. Both staves end with a fermata.

249

Exercise 249 consists of two staves of music. The first staff is in a major key (three sharps) and features an ascending eighth-note scale. The second staff is in the corresponding minor key (three flats) and features a descending eighth-note scale. Both staves end with a fermata. A dashed line labeled '8vb' is positioned below the second staff.

257

Exercise 257 consists of two staves of music. The first staff is in a major key (three sharps) and features an ascending eighth-note scale. The second staff is in the corresponding minor key (three flats) and features a descending eighth-note scale. Both staves end with a fermata. A dashed line labeled '8vb' is positioned below the second staff.

Hveranden dag: Legato (

Every other day: Legato

265

Exercise 265 consists of two staves of music. The first staff is in a major key (three sharps) and features an ascending eighth-note scale. The second staff is in the corresponding minor key (three flats) and features an ascending eighth-note scale. Both staves end with a fermata. A slur is placed under both staves.

275

Exercise 275 consists of two staves of music. The first staff is in a major key (three sharps) and features an ascending eighth-note scale. The second staff is in the corresponding minor key (three flats) and features an ascending eighth-note scale. Both staves end with a fermata. A slur is placed under both staves.

285

Exercise 285 consists of two staves of music. The first staff is in a major key (three sharps) and features an ascending eighth-note scale. The second staff is in the corresponding minor key (three flats) and features an ascending eighth-note scale. Both staves end with a fermata. A slur is placed under both staves.

295

Exercise 295 consists of two staves of music. The first staff is in a major key (three sharps) and features an ascending eighth-note scale. The second staff is in the corresponding minor key (three flats) and features an ascending eighth-note scale. Both staves end with a fermata. A slur is placed under both staves.

305

Exercise 305 consists of two staves of music. The first staff is in a major key (three sharps) and features an ascending eighth-note scale. The second staff is in the corresponding minor key (three flats) and features an ascending eighth-note scale. Both staves end with a fermata. A dashed line labeled '8vb' is positioned below the second staff.

315

Exercise 315 consists of two staves of music. The first staff is in a major key (three sharps) and features an ascending eighth-note scale. The second staff is in the corresponding minor key (three flats) and features an ascending eighth-note scale. Both staves end with a fermata. A dashed line labeled '8vb' is positioned below the second staff.